

MAC DYMO Label Writer 450 TWIN Turbo

School Check IN ----- requires **Version 6.20 or higher**

NOTE: The DYMO Label Writer 450 Twin Turbo has only been tested and certified for School Check IN running on Macintosh OSX 10.6 or higher. Steps listed below will also work for the DYMO Label Writer 400 Twin Turbo.

PRINTER INSTALLTION



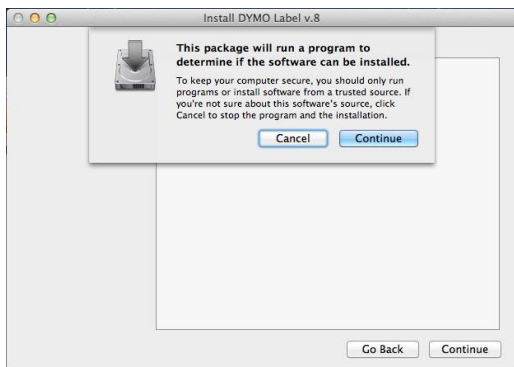
1. Exit (close) School Check IN
2. Plug the USB printer cable from the printer into your computer.
3. Power on the DYMO Label Writer 450 Twin Turbo. Make sure the **BLUE** ready light is on

4. Download Dymo drivers from:
<http://www.schoolcheckin.com/DymoPrinters.htm>

Choose your model, and click the MAC link.



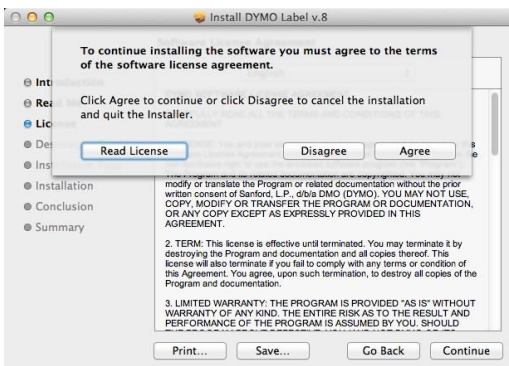
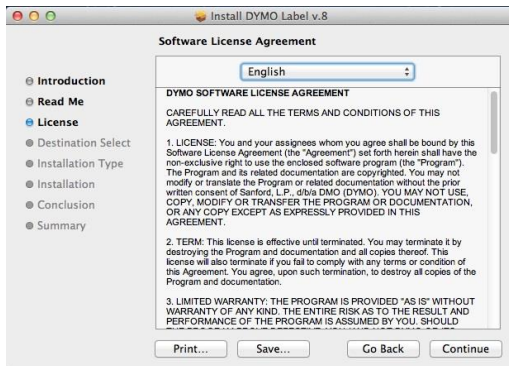
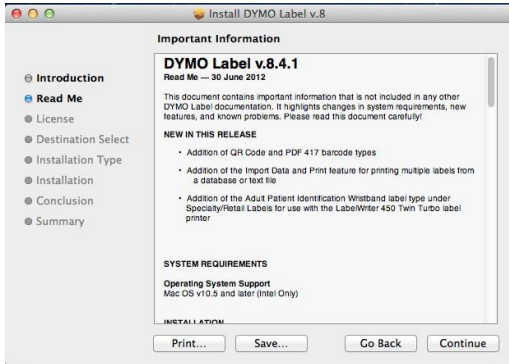
5. Double click the DYMO Label v.8.pkg.

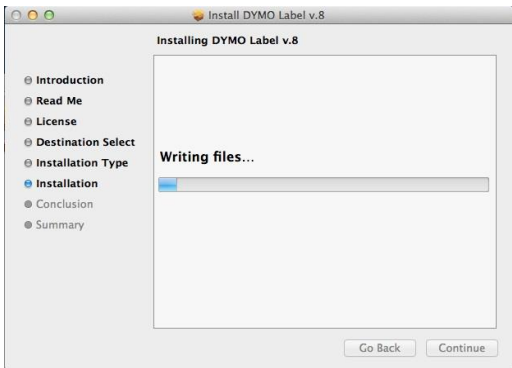
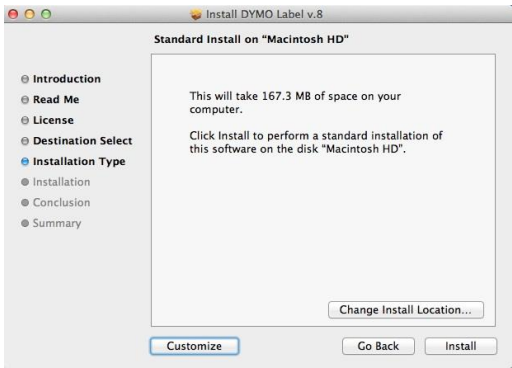


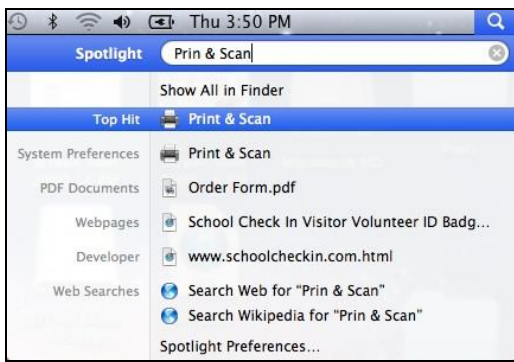
6. Click Continue and follow the on-screen instructions.

7. If requested, enter the Administrator user name and password for your computer.

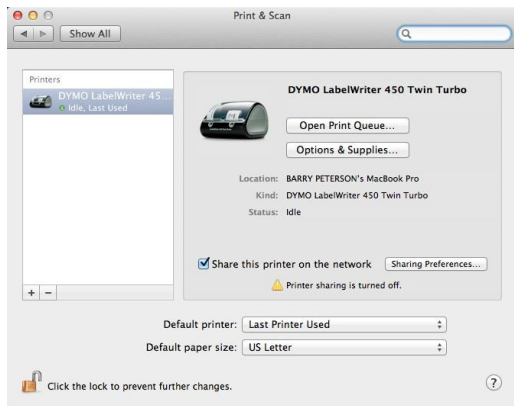
8. Once completed, click Close.





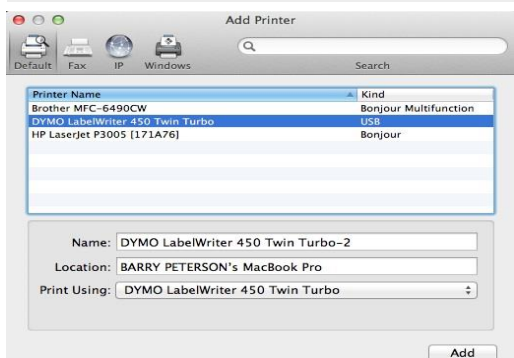
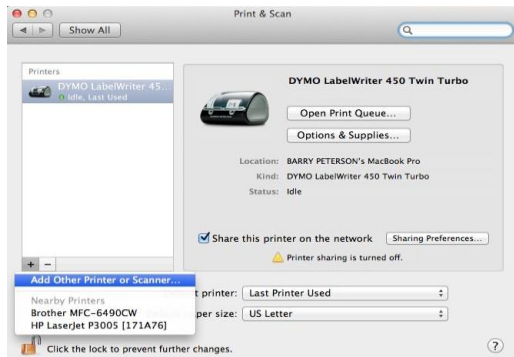


9. Navigate to the Print and Scan Menu on your MAC.

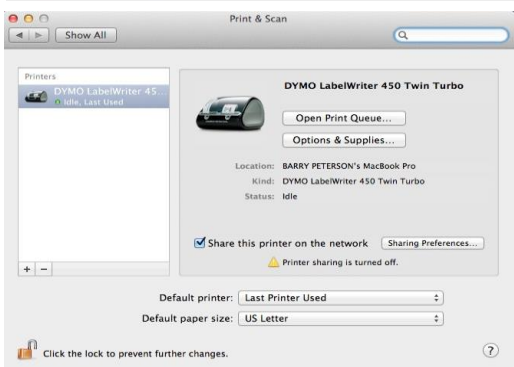


10. Your Dymo LabelWriter should now show in the left pane of the menu.

NOTE: If the DYMO Label Writer 450 Twin Turbo is not showing in the left pane, click on the “+” in the bottom right corner and click on “Add Other Printer or Scanner”. Select “DYMO Label Writer 450 Twin Turbo” and lick Add.



11. Close the Printer List window

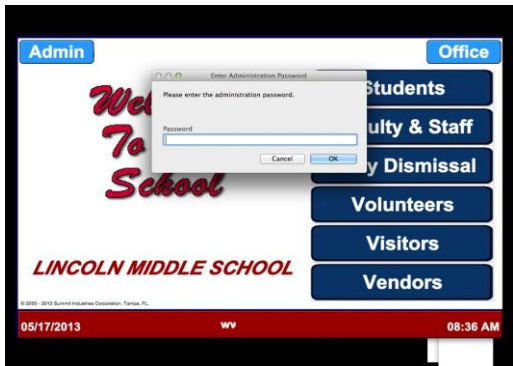


NOTE: School Check IN is built with Filemaker 11 and Filemaker 11 will only work with MAC OS 10.6 or newer.

SCHOOL CHECK IN SETTINGS



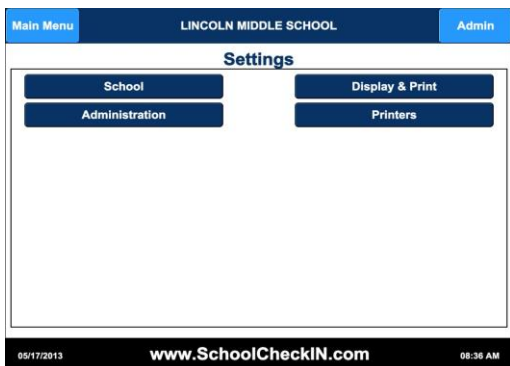
1. Start School Check IN (must be version 6.2 or higher).



2. Access the ADMIN section.



3. Click Settings.



4. Click Printers.

5. **CONTINUOUS** -----
Select **LabelWriter 450 Twin** (select printer model from the drop down pick list).

Printer Name -----

Select **DYMO LabelWriter 450 Twin**

Left Roll ----- select **Continuous**

6. **Peel & Stick** -----

Select **LabelWriter 450 Twin** (select printer model from the drop down pick list).

Printer Name -----

Select **DYMO LabelWriter 450 Twin**

Right Roll ----- select **Peel & Stick**

7. **Report Printer** ----- select printer you wish to use for reports. The report printer if installed should appear in the drop down pick list.

8. Click **Test**, for both sides of the DYMO LabelWriter 450 Twin (Test prints should follow).

Congratulations, the Dymo LabelWriter 450 Twin Turbo is now ready for use.