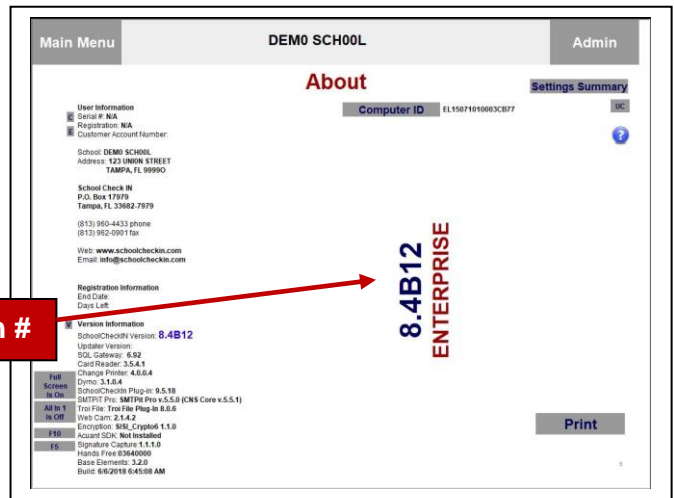
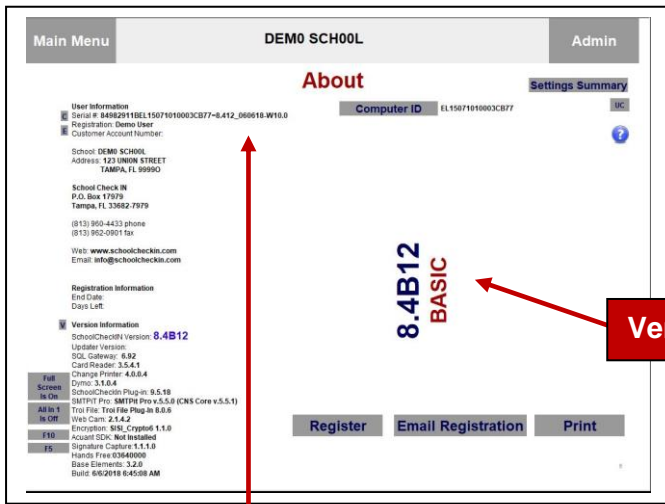


What Version # of School Check IN Do You Have??

The Version # can be found by clicking the About button.



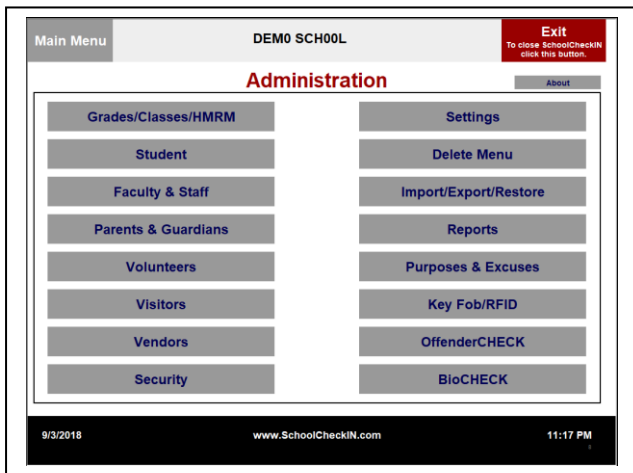
Version #

BASIC only -- The School Check IN Serial # can also be found on the About page.

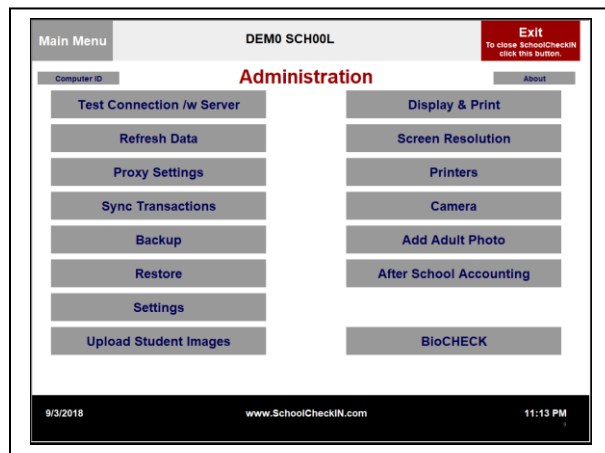
Which Version of School Check IN Do You Have??

School Check IN is available in two configurations - BASIC and ENTERPRISE. Which do you have? The easiest way to tell is from the Main Menu, go to Admin. In Admin, which screen do you see?

BASIC



ENTERPRISE



If you have the wrong version, don't panic, we can change that for you. Contact tech support support@schoolcheckin.com. Tell support that you have BASIC and need to switch to ENTERPRISE, or that the Admin screen shows you have ENTERPRISE and need to switch to BASIC.

Tech support will send you instructions on switching to the correct version. It's a simple settings change.